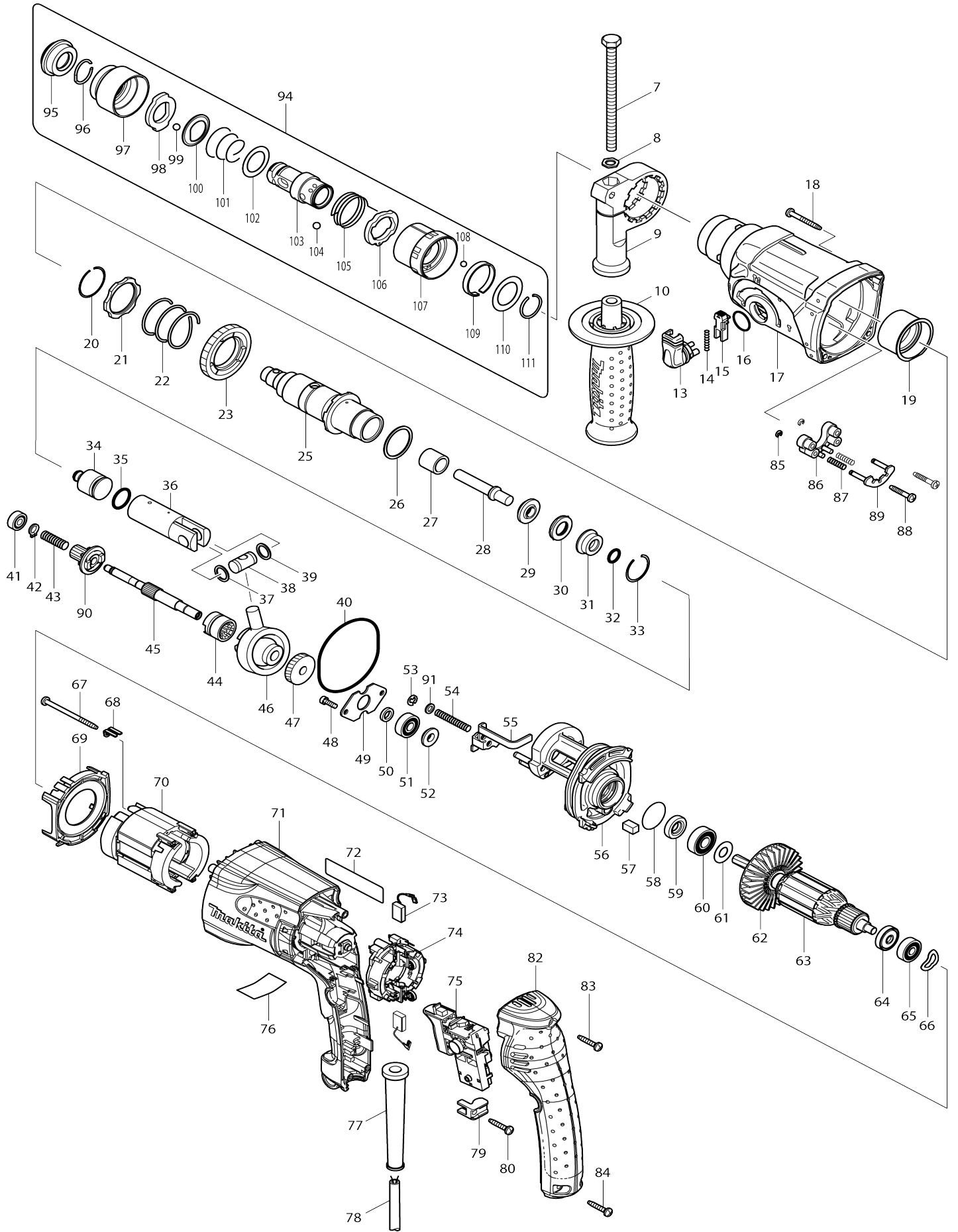


Model No.HR2470T ROTARY HAMMER 24MM



# Model No.HR2470T ROTARY HAMMER 24MM

Item No.	Parts No.	Description
007	921923-8	HEX. BOLT M8X120
007-1	265583-9	HEX. BOLT M8X120
008	345280-4	HEX. WASHER
009	417630-4	GRIP BASE
010	158057-6	GRIP 36 COMPLETE
C10	931402-8	HEX. NUT M8
013	162245-9	CHANGE LEVER
014	233459-8	COMPRESSION SPRING 3
015	419192-8	LOCK BUTTON
016	213278-8	O RING 17
017	158216-2	GEAR HOUSING COMPLETE
C11	213345-9	OIL SEAL 25
018	266351-3	TAPPING SCREW 4X35
018-1	265B69-5	TAPPING SCREW 4X35
019	153290-5	NEEDLE BEARING COMPLETE
020	233929-7	RING SPRING 29
021-1	267460-1	WASHER 31
022	233401-9	COMPRESSION SPRING 32
023	227109-5	SPUR GEAR 51
025	158307-9	TOOL HOLDER GUIDE COMPLETE
026	267229-3	FLAT WASHER 28
027	331769-8	SLEEVE 9
028	324796-2	IMPACT BOLT
029	324402-9	RING 10
030	421955-0	CUSHION RING 13
031	324216-6	O RING CASE
032	213073-6	O RING 9
033	233917-4	RING SPRING 28
034	324733-6	STRIKER
035	213227-5	O RING 16
036	318132-2	PISTON CYLINDER
037	267104-3	FLAT WASHER 12
038	324215-8	PISTON JOINT
039	267104-3	FLAT WASHER 12
040	213727-5	O-RING 63
041-1	210028-2	BALL BEARING 606ZZ
042	961003-8	RETAINING RING S-7
043	233343-7	COMPRESSION SPRING 7
044-1	331992-5	CLUTCH CAM
045	324668-1	CAM SHAFT
046	219014-0	SWASH BEARING 10
046-1	219021-3	SWASH BEARING 10
047	226656-3	HELICAL GEAR 26
048	266273-7	HEX. SOCKET HEAD BOLT M4X12
049	345179-3	BEARING RETAINER
050	267234-0	FLAT WASHER 8
051-1	210029-0	BALL BEARING 608ZZ

052	324212-4	RING 8
053	961011-9	STOP RING E-4
054	233342-9	COMPRESSION SPRING 6
055	345363-0	CHANGE PLATE
056-1	141574-3	INNER HOUSING COMPLETE
058	213407-3	O RING 26
059	213077-8	OIL SEAL 10
059-1	213A72-4	OIL SEAL 10
060	210059-1	BALL BEARING 600DDW
061	267213-8	FLAT WASHER 10
062	240092-9	FAN 64
063	515289-2	ARMATURE ASS'Y 240V
063		INC. 60-62,64,65
063-1	517984-0	ARMATURE ASSY 240V
063-1		INC. 60-62,64,65
064-1	681670-0	INSULATION WASHER
065	210023-2	BALL BEARING 627DDW
066	267804-5	WAVE WASHER 15
067	266334-3	TAPPING SCREW 4X60
067-1	265D36-2	TAPPING SCREW 4X60
068	344871-8	RETAINER
069	419716-0	BAFFLE PLATE
070	626579-9	FIELD 240V
070-1	621884-9	FIELD 240V
070-2	621884-9	FIELD 240V
071	419731-4	MOTOR HOUSING
072	863549-9	HR2470T NAME PLATE
073	194074-2	CARBON BRUSH CB-325
074	638500-6	BRUSH HOLDER UNIT
075	650588-6	SWITCH C3VA-2L-C
076	814964-0	HR2470T SERIAL NO.LABEL
077	682566-8	CORD GUARD 10
078	665890-4	POWER SUPPLY CORD 1.0-2-4.0
079	687260-7	STRAIN RELIEF
080	266324-6	TAPPING SCREW 4X22
080-1	265B46-7	TAPPING SCREW 4X22
082	419717-8	HANDLE COVER
083	266324-6	TAPPING SCREW 4X22
083-1	265B46-7	TAPPING SCREW 4X22
084	266324-6	TAPPING SCREW 4X22
084-1	265B46-7	TAPPING SCREW 4X22
085	961017-7	STOP RING E-3
086	417796-0	GUIDE BASE
087	233344-5	COMPRESSION SPRING 4
088	266374-1	TAPPING SCREW 4X25
088-1	265B73-4	TAPPING SCREW 4X25
089	163430-7	LOCK PLATE COMPLETE
090	227179-4	SPUR GEAR 10
091	941102-2	FLAT WASHER 5
091-1	253542-5	FLAT WASHER 5
094	194080-7	TOOL HOLDER SET

094		INC. 95-111
095	286263-4	CAP 35
096	233940-9	RING SPRING 19
097	418217-5	CHUCK COVER
098	345333-9	STOPPER
099	216022-2	STEEL BALL 7.0
100	345187-4	GUIDE WASHER
101	233916-6	CONICAL COMP. SPRING 21-29
102	267279-8	FLAT WASHER 21
103	324355-2	TOOL HOLDER
104	216013-3	STEEL BALL 6
104-1	216062-0	STEEL BALL 6
105	231669-1	TORSION SPRING 31
106	345334-7	CHANGE RING
107	418218-3	CHANGE COVER
108	216018-3	STEEL BALL 5.0
109	345335-5	LEAF SPRING
110	267270-6	FLAT WASHER 24
111	233924-7	RING SPRING 21
112-1	892830-1	CLEAR LABEL
112-2	816R96-7	CLEAR LABEL
113-1	892829-6	CLEAR LABEL
113-2	816R95-9	CLEAR LABEL
A01	194079-2	DRILL CHUCK SET
C10	251425-3	- FLAT HEAD SCREW M6X22
C20	324353-6	CHUCK HOLDER
C30	418216-7	SPACER
A01-1	194079-2	DRILL CHUCK SET
C20	324353-6	CHUCK HOLDER
C30	418216-7	SPACER
A01-2	194079-2	DRILL CHUCK SET
C20	324353-6	CHUCK HOLDER
C30	418216-7	SPACER
A02	324219-0	DEPTH GAUGE
A03	824799-1	PLASTIC CARRYING CASE
C10	324319-6	SHAFT
C20	417724-5	LATCH
C30	419216-0	HANDLE
A04	805441-3	HR2470T PLASTIC CASE LABEL
A04-1	893699-6	HR2470T PLASTIC CASE LABEL
A04-2	816S57-3	HR2470T PLASTIC CASE LABEL
B01	195263-2	HAMMER SERVICE KIT SET
C10	195127-0	OIL VESSEL SET
B01		INC. 30,32,33,35,73,95,99
F06	1914C6-5	GREASE SET
F25	192349-3	JOINT 25
G12	1914X3-8	DUST EXTRACTION PAD SET